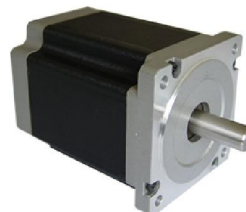


HS3485 Two Phase 1.8° Stepper Motors

■ Features

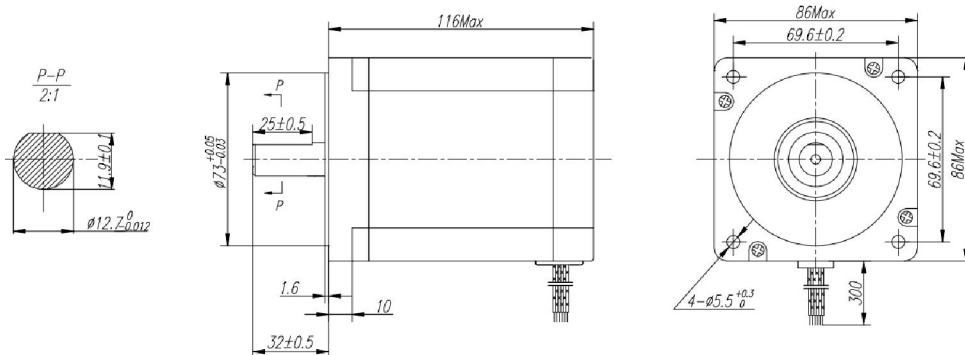
- 1.8° Stepping Angle
- NEMA 34
- High Torque
- High Accuracy
- Smooth Movement



■ Specification

Model	Connection	Holding Torque	Phase Current	Resistance	Inductance	Detention Torque	Rotor Inertia	Shaft Size	Lead Number	Length	Weight
		Oz-in (NM)	A	ohm	mH	Oz-in	oz-in-sec ²	inch			
HS3485S1	Bipolar Parallel	1200 (8.5)	7.0	0.4	3.2	17.70	0.03525	0.5	8	4.57	8.1
	Bipolar Series	1200 (8.5)	3.5	1.6	12.8						
	Unipolar	850 (6.0)	5.0	0.8	3.2						

■ Mechanical Dimension



■ Wiring Diagram

