



86 series 3-phase Stepping Motors



General Specifications

Step Angle Accuracy	+5%(full step, no load)
Temperature Rise	80°CMax
Ambient Temperature	-10°C -- +50°C
Insulation Resistance	100MΩmin.500VDC
Dielectric Strength	500VAC for one minute
Shaft Radial Play	0.06 Max.(450g-load)
Shaft Axial Play	0.08 max.(450g-load)

Electrical Specifications

Model No.	Step Angle	Holding Torque	Current /phase	Inductance /phase	Resistance /phase	# of leads	Rotor Inertia	Detent Torque	Motor Weight	Motor Length L
	(°)	N.m	A	mH	Ohm		g.cm ²	N.cm	Kg	mm
863S22	1.2	2.0	5.0	2.8	0.9	6	1200	-	2.1	73
863S42	1.2	4.0	5.0	4.5	1.35	6	2500	-	3.0	105
863S68H	1.2	6.78	3.5	20	4.5	6	3300	-	3.8	127

* Above motors are our typical models, and if you need a customization motor, please contact us.

Mechanical Specifications

Dimensions are in millimeters and 1 inch=25.4mm.

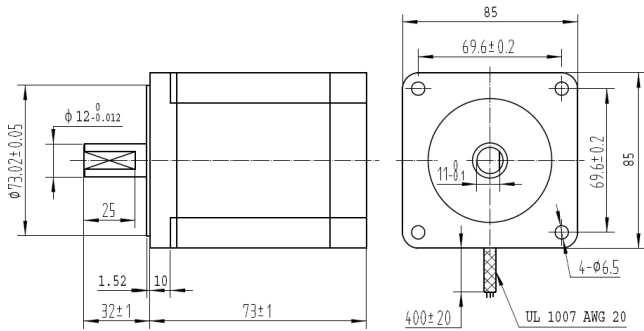


Figure 1: Mechanical specifications of 863S22

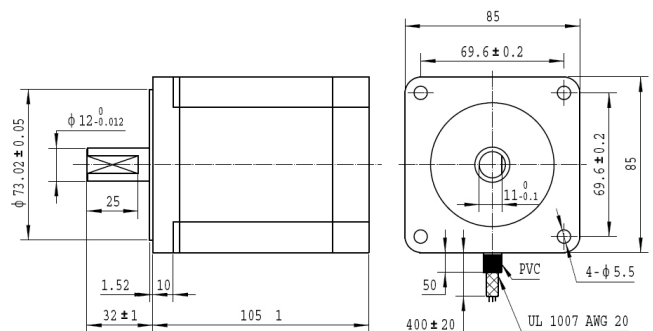


Figure 2: Mechanical specifications of 863S42

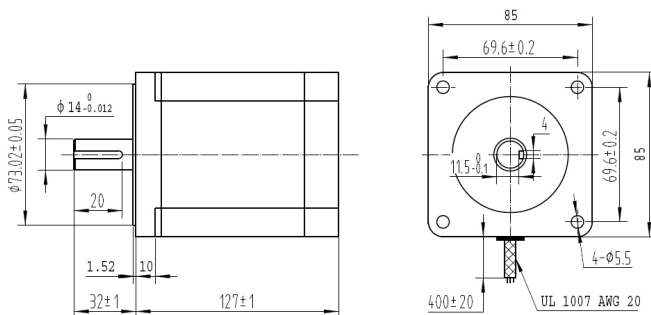


Figure 3: Mechanical specifications of 863S68H



Wiring Diagrams

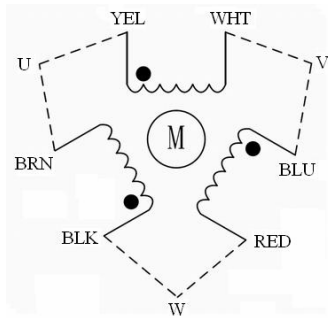


Figure 4: Wiring diagram of the 863Sxx